

# Epistle

*December 2021  
Monthly Newsletter of Saint Paul's  
Evangelical Lutheran church  
Walkersville, Maryland*



## December Birthdays

December 2	Elias Plowman
December 3	Matthew Plowman
December 4	Candace Foucart Benjamin Zeller
December 5	Jimmy Ake
December 8	Katrina Pank
December 12	Charles Easterday, Jr.
December 16	Dylan Barrett Chris Leins
December 17	Deb Horton
December 20	Harper Jennings
December 22	Holly Fouche Madelyn Kahler
December 24	Russ Mildenstein
December 26	Gary Barrett, Jr. Ella Johnson
December 28	Amy Mildenstein
December 29	Kathryn King
December 31	Mike Waas

## Christmas Eve Service

We will be offering one service with two options. There will be one candlelight worship service at St. Paul's this year. We are offering a traditional service with Holy Communion at 7pm on December 24<sup>th</sup>

Option 1: Join in the Livestream of the service at 7pm on our church Facebook page. You can find us @saintpaulslutheranofwalkersville, you do not need to have a Facebook account to watch the service. You can also watch live by going to our Website directly. The video will be available on our page after the live recording for you to view whenever and wherever you may be this Christmas.

Option 2: Attend in person, if you feel comfortable. We would ask that you arrive between 6:30 and 6:55pm and enter through the side door of the church. Please follow the directions of the ushers and we highly encourage that you wear your facial covering while inside the church. If you have not attended service in person since our reopening, you will be asked to provide contact tracing information you enter.





## Pastor's Peace

"May the God of hope fill you with all joy and peace in believing, so that by the power of the Holy Spirit you may abound in hope."

**Romans 15:13**

As we come to the season of Advent, we reflect on the birth of our savior and the good things in our lives because of this gift from our Creator. While the times we are in may preclude our normal gatherings, singing in a full sanctuary, joining friends and family, or just witnessing the joy of the season, we are encouraged in our lives with all the blessings we have received this year. However for some people this is not always a season of joy, yet it is one of heartache, disappointment, and hurt. There are many in our communities who are struggling with homelessness, poverty, and illness who find it difficult to find comfort in the festive atmosphere we so often we associate with Christmas. We have all had darkness enter our lives and recently I also experienced darkness in my life. It was not the first time that darkness crept into my heart and into the very essence of my being. This darkness was something that I had dealt with before, but it was different, it was effecting my loved one in a way that could not be controlled. What many of us also have trouble with is looking to the Light for safety and security in these times. I will admit that I did not look where I should have been looking for comfort and assurance, I was more focused on the problem going on and how I was going to be able to fix it. We all struggle with dealing with the darkness in our lives especially when everyone else is celebrating the season or other happy times. People don't know we are having difficulty making sense of what is going on in our lives because we are good at hiding our troubles. We often mask it very well and put on the game face for everyone, but this is not the healthy way to overcome the darkness. We have a variety of ways to defeat the darkness in our lives because we have the remedy in our hearts. The Light has come into the world to spare us from the darkness and give us the ability to live out our days in peace.

When things are difficult for us we often feel the burden or weight of a yoke around our necks. In the time of darkness we often need to be built up and given assurance that there is an answer to our troubles or the darkness. Jesus confirms what John the Baptist has known all along, that he is the Light come to defeat the darkness. Jesus is our light and the one who has come to take away all that burdens us. We are most likely to experience Our Creator's presence and power in the company of the humble and vulnerable, the people who are usually found at the margins of our communities. They may be children or strangers, people who are not sure whether or how they fit. That is sometimes us, those of us who don't know how to make our voice known or can't seem to reach out to the Light or a form of support that will lead us to the Light. There are many avenues in which we can find the Light during this time, it can be through a friend, someone in the church, our pastor, or any of the services which we have listed in this month's Epistle. There is no stigma attached to asking for help when we are in need and there are plenty of resources to help. If you are struggling during this time, I encourage you to ask for someone to come beside you. Stephen Ministers are another valuable resource to walk beside you in a confidential way.

***Help us decorate for Christmas  
by purchasing a Poinsettia!***

Red are available for \$10.00 each.

You can order online through our website, you can use the QR code below, or in person at the Parish Office, with a check or cash.

***The deadline for ordering is  
Sunday, December 19th.***





# Everyone needs a little help sometimes.

The Knowledge Network

## Suicide:

CALL: 1-800-273-8255  
OR  
TEXT: HELLO TO 741741

Domestic Violence:  
CALL: 1-800-799-7233  
OR  
TEXT: SUPPORT TO 741741

## Bullying:

1-800-420-1479  
OR  
TEXT: HOME TO 741741

## Self Harm:

CALL: 1-800-366-8288  
OR  
TEXT: CONNECT TO 741741

## LGBTQ+:

CALL: 1-866-488-7386  
OR  
TEXT: START TO 678678

## Sexual Assault:

CALL: 1-800-656-4673  
OR  
TEXT: HOME TO 741741

## Abortion:

CALL: 1-866-439-4253  
OR  
TEXT: HELPLINE TO 313131

Pregnancy Infant  
& Child loss:  
CALL: 1-800-944-4773  
OR  
TEXT: HELLO TO 741741

## Grief:

CALL: 1-800-445-4808  
OR  
TEXT: CARE TO 838863

Eating Disorders:  
CALL: 1-800-931-2237  
OR  
TEXT: NEDA TO 741741

For more hotlines  
& resources visit:  
[GRIEFRESOURCENETWORK.COM](http://GRIEFRESOURCENETWORK.COM)

Mental Health:  
CALL: 1-800-950-6264  
OR  
TEXT: NAM TO 741741

## Pastor's Peace Cont'd

Through prayer there is always someone who can share God's love with you and we at St. Paul's Evangelical Lutheran Church in Walkersville want to come beside you to cultivate and nourish the mind, body, and spirit of all who are searching. I invite you to reach out to someone with whom you have not connected in some time. Reach out and let them know the Good News of the child who came to give us hope, the child who lives in our hearts, and the child who has let His Light so shine He overcomes the darkness in our lives. In those times when we are struggling, we can embrace the goodness of Jesus and do not have to be alone. For unto us a child is born, for unto us a Savior is given. Do not be afraid and reach out because through the power of the Light we can all overcome our troubles. Merry Christmas.

Should you have any questions or concerns, I am glad to speak with you at any time.

**Peace Pastor Phil**

Email: [pastor@saintpaulslutheranchurch.org](mailto:pastor@saintpaulslutheranchurch.org)

Cell phone: 202-497-0584

*“May God's grace be on all who love  
our Lord Jesus Christ”*

*— Ephesians 6:24*

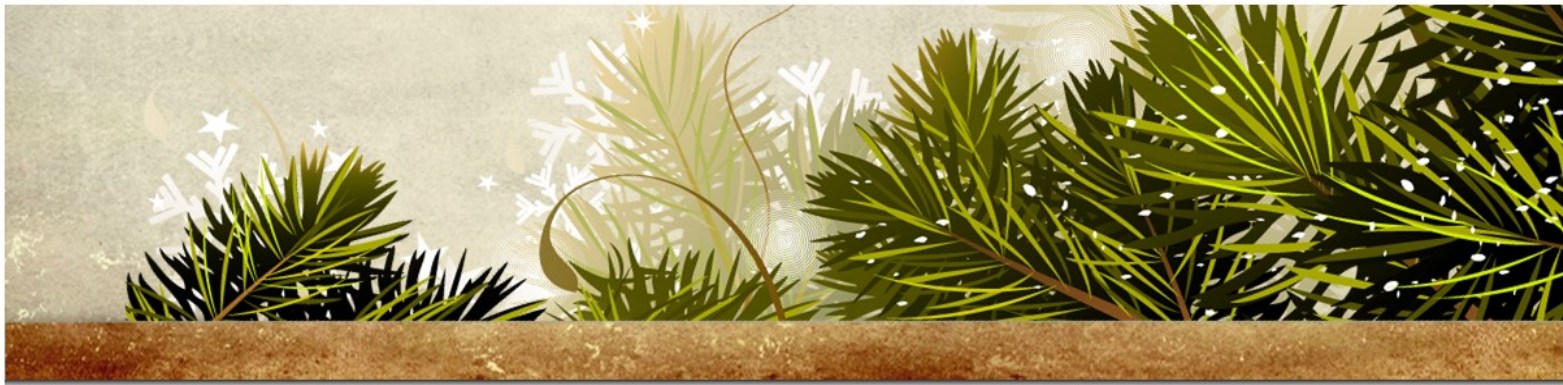
# Prayer List

## Prayer List Updates

As we look forward to a new year, the office is updating our records, including the prayer list. If you, or someone you know, is on the prayer list currently, and you would like them to **remain** on the prayer list, please call or email the office at [officeadministration@saintpaulslutheranchurch.org](mailto:officeadministration@saintpaulslutheranchurch.org) to confirm this! Thank you.







Winter Love Bags – an outreach project to comfort those during the winter months who are recently bereaved, sick, elderly, unable to leave one's home (especially during COVID) and those we care about at St. Paul's and in our community.

***ALL FAMILIES AND CHILDREN  
ARE WELCOME TO PARTICIPATE!***

Congregational Life Committee is asking for your support by donating monies or purchasing the following items to help us fill the comfort bags: packaged hard candy bags, cough drops, Chapstick (brand), playing cards, word search books, puzzle books, Kleenex small square boxes, any prepackaged snacks, or anything that will bring care and love to shut-ins.

***Now through December 5th*** – Submit names of loved ones to receive a comfort bag to Marcia Gupta @ 26mbgup2405@gmail.com or 301-662-8044.

***Now through December 8th*** - Donations can be dropped off during office hours (in the designated bin) or on Sundays (church).



***PLEASE JOIN US!!***

***December 11th @ TBD*** – Everyone is invited to help with packing the winter comfort bags in the Parish Hall. Afterwards, we will carpool and deliver the comfort bags and sing carols.

***We are again blessed that an anonymous donor has offered a matching challenge of \$1,500 to assist where most needed by the end of the year. If members of the congregation can contribute \$1,500 over and above their normal giving, the anonymous member will match the contribution.***

***If you are writing a check, please include "Challenge" on the memo line. If you prefer to give on-line, please use the "GIVE NOW" button and choose the undesignated selection in the Fund dropdown and add "Challenge" in the "Note" section. The deadline for the challenge is Sunday, December 26 th .***





*"It's not how much we  
give but how much love  
we put into giving."*

—Mother Theresa

*"Thank you so very much for your generous  
donation to Patty's Heart (Kenya) Children's  
Home Construction Fund. The building itself  
is nearing completion, and your donation is a  
huge help in the last minute finishing details.  
We are also in the process of building a  
combined office for Mum Jane (the director)  
and the security personnel. We are hoping to  
have the children moved into their new home  
by Christmas. After that, we will construct  
and animal shelter and living space for the  
animal caretaker, a much needed playground  
for the children. Your gift is such a blessing!*

*Blessings and thank again!"*

*Pastor Sondra  
Open Word Board of Directors*

# Thank you...



## Children of Incarcerated Parents Partnership

*Our mission is to foster the growth of strong, resilient, hopeful children who are impacted by the incarceration of a loved one in the Frederick County region.*

• P.O. Box 791, Frederick, MD. 21705-0791 • Phone: 240-578-5662

November 17, 2021

Dear Staff and Parishoners of St. Paul's Lutheran Church,

Because of your extremely generous donation of \$100.00 to Children of Incarcerated Parents Partnership, our organization has been able to continue all of our present activities and grow to meet the ever changing needs of these children and their families.

Your donation has enabled us to place money on telephone accounts so that families can talk with each other, in addition to providing inmates with pre-stamped postcards to send to their children. We have continued with curbside sharing fairs, which include gift cards for families in dire need, because of your generosity. Your monetary donation has allowed us to conduct respite meetings and workshops for caregivers via zoom.

One of our partners, Curious Iguana Bookstore, has helped us compile sets of books to be mailed to our children. These themed packets provide a fun and exciting learning experience for our families (for instance, a packet of books about different places around the world, and a child friendly cookbook of recipes from those countries). These are provided to our families because of donors like you!

We continue to provide scholarships for those raising children who have an incarcerated parent. These are only some of our projects and activities – we are constantly assessing the needs of our families and ways in which to address those needs. We could not do these projects and activities without you.

Many thanks. It does take a village to raise a child, and we are proud that you are a part of ours.

Most Sincerely,

*Shirley White*

Shirley White

Corresponding Secretary

Children of Incarcerated Parents Partnership

*For tax purposes, COIPP, a 501(c)(3) tax exempt organization, confirms that no goods or services were received in exchange for your donation.*

*On behalf of Shari, our Board of Directors, our Volunteers,  
and most especially the families we serve - Thank You!!!*

Glade Valley Community Services, Inc.  
P.O. Box 655  
Walkersville, MD 21793  
Phone: 301-845-0213 FAX: 301-845-9811



November 18, 2021

St. Paul's Lutheran Church  
19 W. Pennsylvania Ave.  
Walkersville, MD 21793

Thank you for your \$100.00 donation to Glade Valley Community Services. Your donation will be deposited in our general fund and be allocated as needed to support existing programs and/or new programs, as determined by the Glade Valley Community Services Board of Directors, to meet the ongoing needs of families and individuals living in our area.

We look forward to your continued support.

Sincerely,

*Vicki L. Loebe*  
Glade Valley Community Services, Inc.  
Neighbors Helping Neighbors

*St. Paul's Heroes © Thank you so much - again -  
for your support and contribution to our  
programs. With our programs all running, as  
usual, we continue to be busy and trying to meet  
the varied needs of those in our community  
who seek our help. Thank you for partnering with us!*

Please keep this acknowledgement for your tax records. GVCS is a 501(c)(3) organization. Pursuant to section 170(f)(8) of the Internal Revenue Code we acknowledge that the donor did not receive any goods or services in whole or partial consideration for the above contribution.

GVCS  
Programs  
  
Glade Valley  
Food Bank  
  
Emergency Relief  
Fund  
  
Community Thrift  
Shop  
  
Back-To-School  
Project  
  
Holiday Toy Shop

# Council Corner



As the Advent season begins, your Congregation Council is busy preparing for the annual Congregation Meeting scheduled for January 30, 2022.

One of the items on the agenda will be updating St. Paul's constitution. St. Paul's constitution was last updated in 2010.

It is recommended that ELCA congregations and synods review the adopted amendments for their constitutions as soon as possible after each churchwide assembly (every 2 years) to incorporate the required changes and to consider the recommended changes. This current edition of the *Model Constitution for Congregations of the Evangelical Lutheran Church in America* contains changes adopted by all churchwide assemblies, including the fifteenth Churchwide Assembly in 2019. It is consistent with the requirements of the governing documents of the ELCA's churchwide organization and synods, and it provides organizational flexibility to recognize the context of local congregations. The synod shall notify the congregation of its decision to approve or disapprove the proposed changes; the changes shall go into effect upon notification that the synod has approved them.

The Congregation Council compared the current 2010 constitution with the 2019 Model Constitution for Congregations of the ELCA for the past six months. Council will be making recommendations for the "proposed" 2022 constitution to the congregation to vote on at the annual meeting. At least two weeks prior to the annual meeting, a copy of the "proposed" 2022 constitution will be made available to the congregation to review. Some of the items in the "proposed" 2022 constitution the congregation will consider, but not limited to:

## 1. [Revisit Chapter 8 - Membership classifications - What are the different classifications?](#)

- a. **Baptized members** - those persons who have been received by the Sacrament of Holy Baptism in this congregation, or, having been previously in the name of the Triune God, have been received by certificate of transfer from other Lutheran congregations or by affirmation of faith.
  - b. **Confirmed members** - those who have been confirmed in this congregation; those who have been received by adult baptism or by transfer as confirmed members from other Lutheran congregations, or baptized persons received by affirmation of faith.
  - c. **Voting members** - are confirmed members. Such confirmed members, during the current or preceding calendar year, shall have communed in this congregation AND shall have made a contribution of record to this congregation. Members of this congregation who have satisfied these basic standards shall have the privilege of voice and vote at every regular and special meeting of this congregation as well as other rights and privileges ascribed to voting members by the provisions of this constitution and its bylaws. They shall not have voted as a seasoned member of another congregation of this church in the previous two calendar months.
  - d. **Associate members** - are persons who hold membership in other Christian congregations who wish to retain such membership but desire to participate in the life and mission of this congregation. These individuals have all the privileges and duties of membership except voting rights or other rights and privileges ascribed to voting members by the provisions of this constitution and bylaws.
  - e. **Seasonal members** - are voting members of other congregations of this church who wish to retain such membership but desire to participate in the life and mission of this congregation, including exercising limited voting rights in this congregation.
2. [Chapter 8: Process on removing a person from the roll](#) due to inactivity in accordance with the provisions of this constitution and its bylaws?
  3. [Chapter 10 Congregation Meeting](#) - Number of voting members needed to make quorum to hold congregation meetings and special meetings?
  4. [Chapter 13 Congregation Committees](#) - Committees/Ministries and their responsibilities; the congregation will determine what committees/ministries to uplift in the coming year(s).

When the "proposed" 2022 constitution becomes available in January, please make time to review the recommendations/changes.

There will be a town Hall Meeting the Sunday before the Annual Congregational meeting to allow for questions.

## Challenge for 2022:

*What committee/ministry work will you participate in to serve and share your gifts and talents with others?*